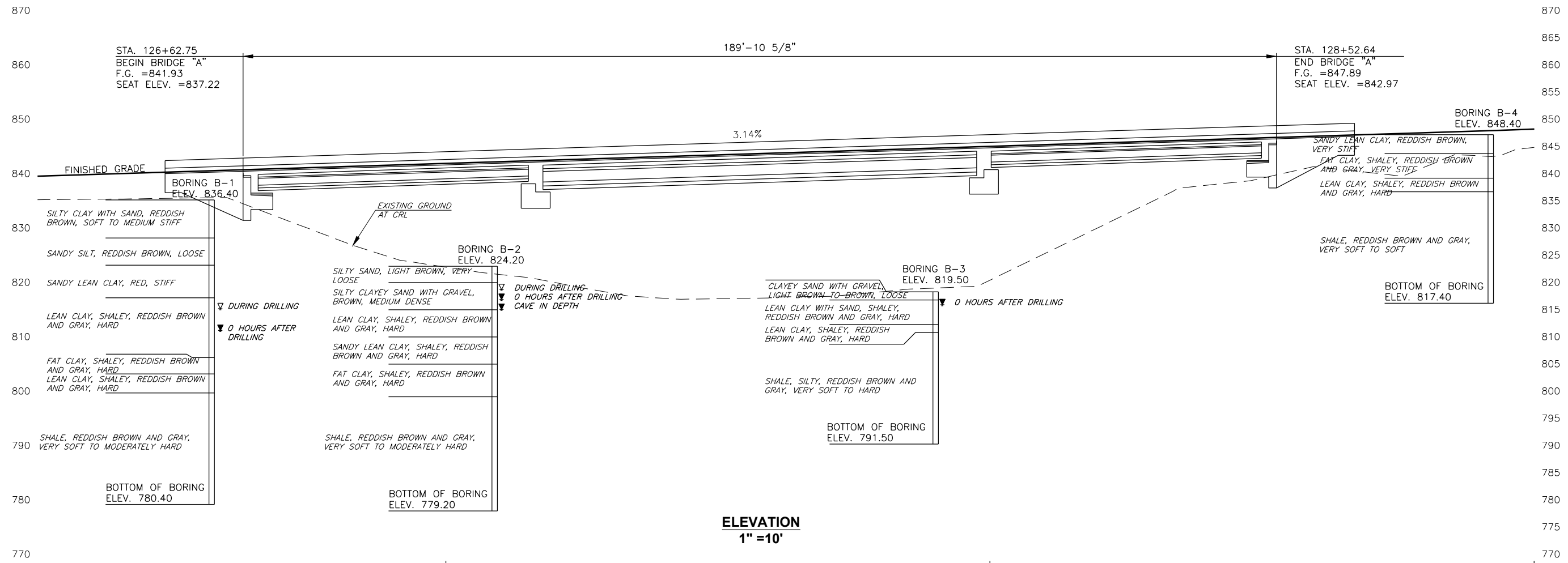


PLAN
CONTOUR INTERVAL = 1'



ELEVATION
1" = 10'

BM #205 STA. 123+65.09 AT 167.58' LT.
SET RR SPIKE E FACE 36" DBL TRUNK
ELEV. 837.69'

BM #206 STA. 128+49.17 AT 49.12' LT.
SET RR SPIKE N FACE PP
ELEV. 848.63'

BRIDGE "A": CONST. 50' TYPE II - 80' TYPE III - 50' TYPE II P.C. BEAM CONVENTIONAL SPAN BRIDGE SKEWED. 30° RT. FORWARD CL STATION 127+57.70.

PENETROMETER RESULTS 127+00

BORING B-1		
ELEV.	RESULTS	
800.40	50/3.5"	50/3.0"
795.40	50/5.3"	50/3.8"
790.40	50/1.5"	50/1.0"
785.40	50/3.5"	50/2.3"
780.40	50/3.0"	50/2.5"

PENETROMETER RESULTS 127+00

BORING B-2		
ELEV.	RESULTS	
799.20	50/5.5"	50/4.5"
794.20	50/1.1"	50/1.0"
789.20	50/3.8"	50/3.3"
784.20	50/4.5"	50/3.3"
779.20	50/2.5"	50/1.9"

PENETROMETER RESULTS 128+00

BORING B-3		
ELEV.	RESULTS	
811.50	50/2.0"	50/1.5"
806.50	50/1.1"	50/0.4"
801.50	50/5.0"	50/3.8"
796.50	50/4.4"	50/4.4"
791.50	50/4.4"	50/4.5"

PENETROMETER RESULTS 129+00

BORING B-4		
ELEV.	RESULTS	
837.40	50/3.5"	50/3.3"
832.40	50/5.0"	50/4.0"
827.40	50/2.3"	50/1.3"
822.40	50/4.3"	50/3.8"
817.40	50/2.3"	50/1.0"

WALNUT CREEK CARTER COUNTY

**GEOTECHNICAL INFORMATION
BRIDGE "A"**

JOB PIECE NO. 28448(04) SHEET NO. B003